



Directions to W Fort George Wright Dr
3.7 mi -- about 12 mins

Save trees. Go green!

Download Google Maps on your phone at google.com/gmm



Carpool
Driving Instructions to relay zones

Riverfront Park/W Spokane Falls Blvd to W Fort George Wright Dr - Google Maps

Riverfront Park/W Spokane Falls Blvd

1. Head west on Riverfront Park/W Spokane Falls Blvd toward N Wall St
Continue to follow W Spokane Falls Blvd
2. Sharp right at N Monroe St
About 2 mins
3. Turn left at W Boone Ave
About 2 mins
4. Turn right at N Maple St
About 1 min
5. Turn left at W Maxwell Ave
About 2 mins
6. Continue on N Pettet Dr/Pettet Dr (Down Doomsday Hill)
About 3 mins
7. Turn right to merge onto N T J Meenach Dr
8. Continue on W Fort George Wright Dr
About 2 mins

go 0.3 mi
total 0.3 mi

go 0.6 mi
total 0.9 mi

go 0.4 mi
total 1.3 mi

go 0.2 mi
total 1.5 mi

go 0.3 mi
total 1.8 mi

go 0.9 mi
total 2.8 mi

go 0.1 mi
total 2.9 mi

go 0.9 mi
total 3.7 mi

- Map #1
- Relay Zone #1
- Drop off Runner #2
- Pick-up Runner #1

W Fort George Wright Dr

Zone #1 near SFCC Track
Parking at SFCC

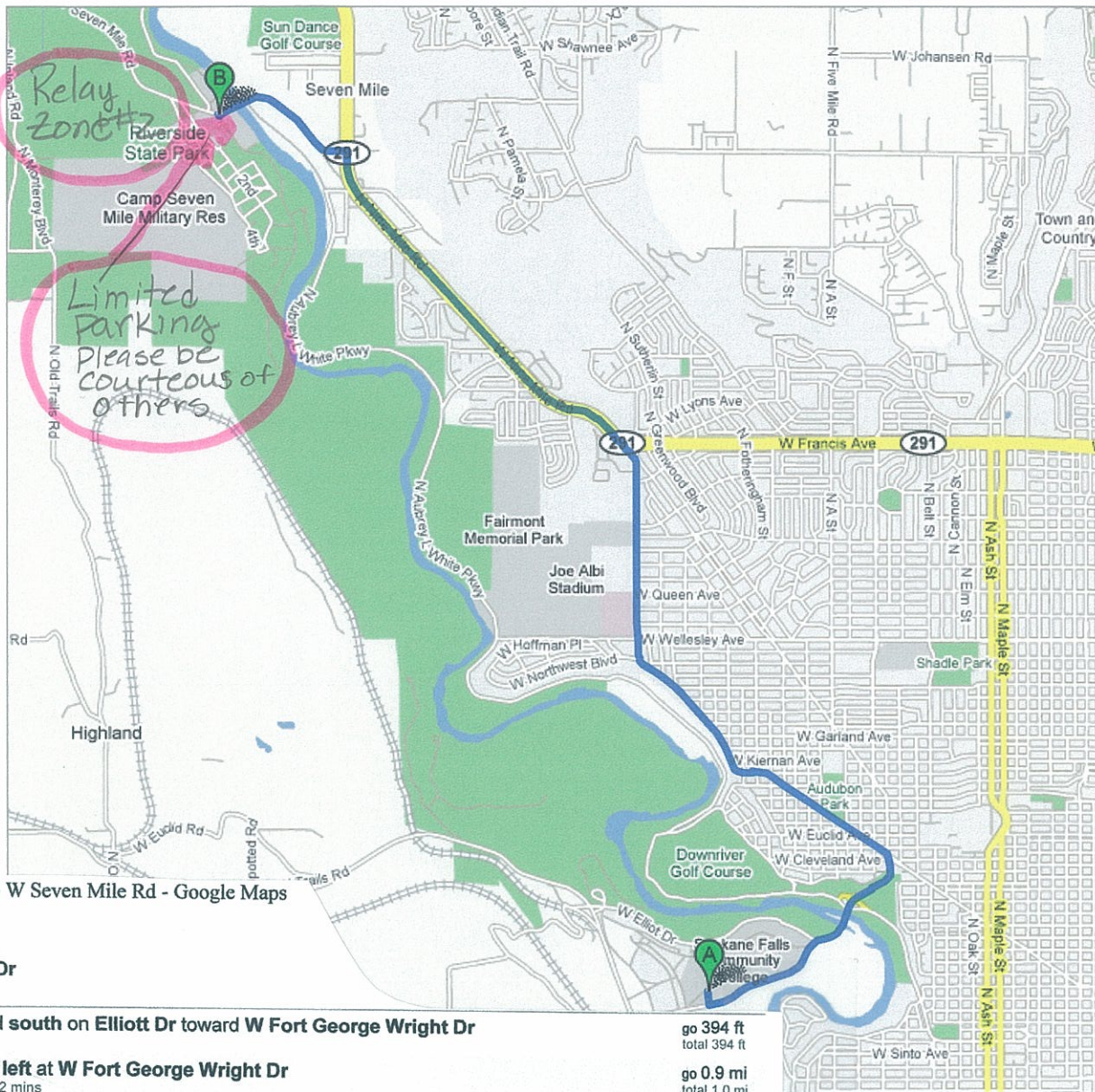
These directions are for planning purposes only. You may find that construction projects, traffic, weather, or other events may cause conditions to differ from the map results, and you should plan your route accordingly. You must obey all signs or notices regarding your route.



Directions to W Seven Mile Rd
7.1 mi – about 21 mins

Save trees. Go green!
Download Google Maps on your phone at google.com/gmm

Carpool
Driving Instructions to relay Zones



Elliott Dr to W Seven Mile Rd - Google Maps

A Elliott Dr

1. Head south on Elliott Dr toward W Fort George Wright Dr
2. Turn left at W Fort George Wright Dr
About 2 mins
3. Continue on N T J Meenach Dr
About 1 min
4. Turn left at W Northwest Blvd
About 7 mins
5. Continue on N Assembly St
About 3 mins
6. Continue on W Nine Mile Rd
7. Continue straight to stay on W Nine Mile Rd
About 5 mins
8. Turn left at W Lowell Ave
About 1 min
9. Slight right at N 7 Mile Ext/N Seven Mile Rd
Continue to follow N Seven Mile Rd
About 2 mins

go 394 ft
total 394 ft

go 0.9 mi
total 1.0 mi

go 0.4 mi
total 1.4 mi

go 1.7 mi
total 3.1 mi

go 1.0 mi
total 4.1 mi

go 341 ft
total 4.2 mi

go 2.2 mi
total 6.3 mi

go 0.1 mi
total 6.5 mi

go 0.7 mi
total 7.1 mi

B W Seven Mile Rd Zone #2 Westside of Seven Mile Bridge.
note: Limited parking please be courteous.

- Map # 2
- Relay Zone # 2
- Drop of Runner # 3
- Pick-up Runner # 2

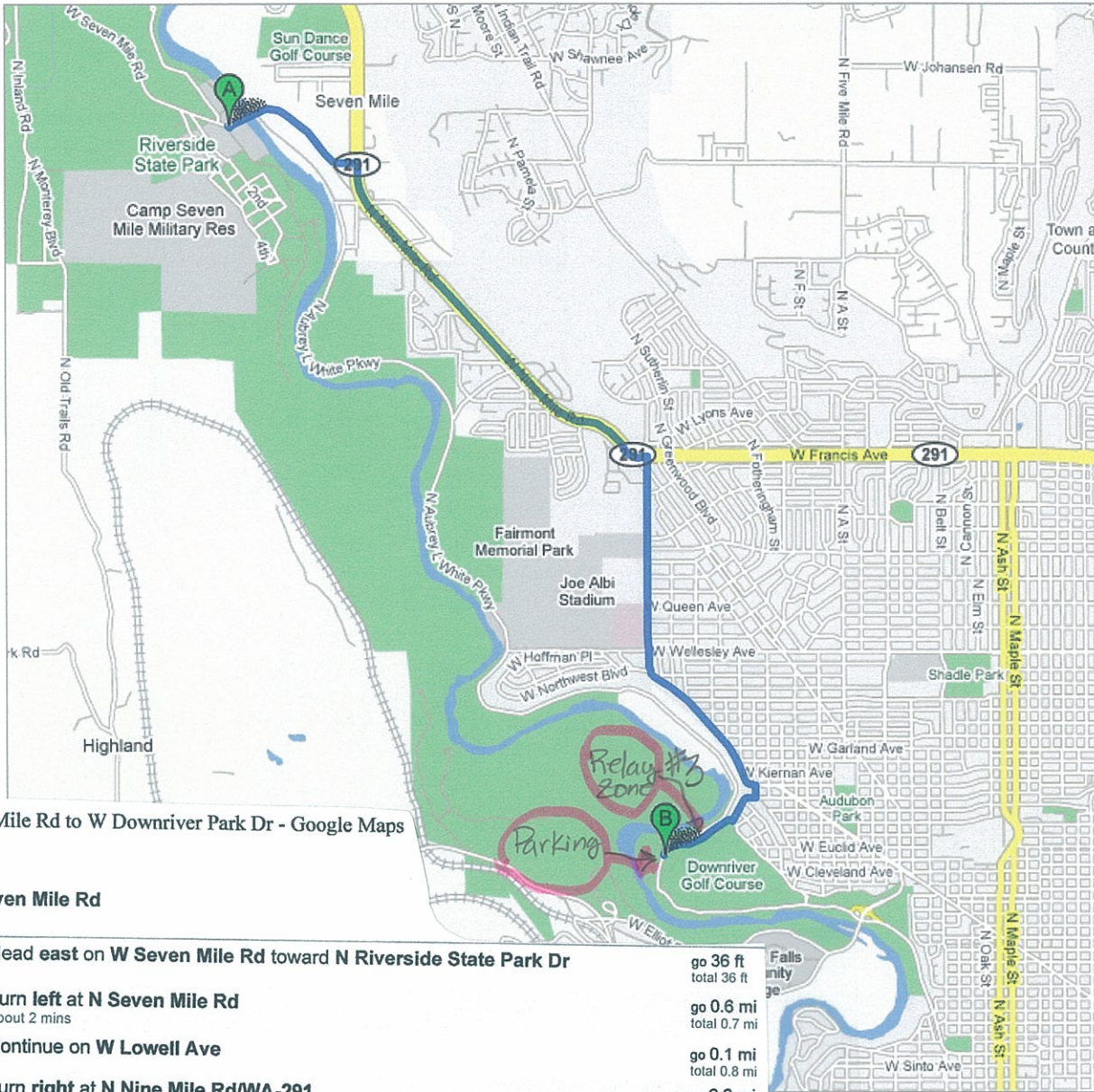
These directions are for planning purposes only. You may find that construction projects, traffic, weather, or other events may cause conditions to differ from the map results, and you should plan your route accordingly. You must obey all signs or notices regarding your route.



Directions to W Downriver Park Dr
5.6 mi – about 14 mins



Carpool
Driving Instruction to relay zones



W Seven Mile Rd to W Downriver Park Dr - Google Maps

W Seven Mile Rd

1. Head east on W Seven Mile Rd toward N Riverside State Park Dr
2. Turn left at N Seven Mile Rd
About 2 mins
3. Continue on W Lowell Ave
4. Turn right at N Nine Mile Rd/WA-291
Continue to follow WA-291
About 5 mins
5. Turn right at N Assembly St
6. Continue straight to stay on N Assembly St
About 3 mins
7. Slight left at W Northwest Blvd
About 3 mins
8. Turn right at N H St
9. Turn right at W Glass Ave
10. Continue on N Columbia Circle
11. Turn right at W Downriver Park Dr
About 1 min

- go 36 ft total 36 ft
- go 0.6 mi total 0.7 mi
- go 0.1 mi total 0.8 mi
- go 2.2 mi total 3.0 mi
- go 305 ft total 3.1 mi
- go 1.0 mi total 4.1 mi
- go 0.8 mi total 4.9 mi
- go 341 ft total 5.0 mi
- go 243 ft total 5.0 mi
- go 0.1 mi total 5.2 mi
- go 0.4 mi total 5.6 mi

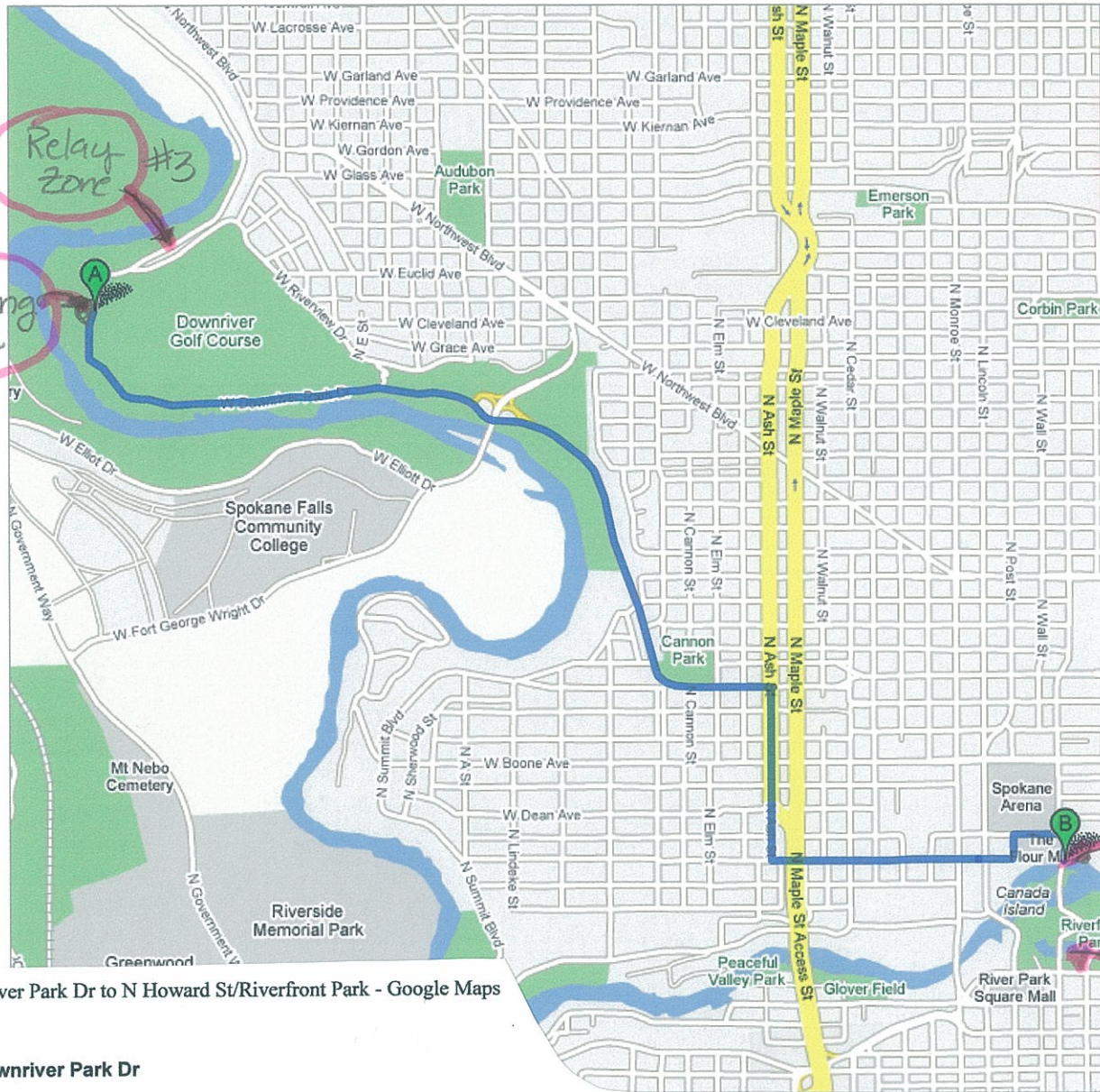
- Map # 3
- Relay Zone # 3
- Drop off Runner # 4
- Pick-up Runner # 3

W Downriver Park Dr Zone # 3 at Riverside State Park sign
parking located 1/4 mile south of Relay Zone

These directions are for planning purposes only. You may find that construction projects, traffic, weather, or other events may cause conditions to differ from the map results, and you should plan your route accordingly. You must obey all signs or notices regarding your route.



Directions to N Howard St/Riverfront Park
3.7 mi – about 12 mins



W Downriver Park Dr to N Howard St/Riverfront Park - Google Maps

W Downriver Park Dr

1. Head south on **W Downriver Park Dr** toward **Downriver GC**
About 3 mins
2. Continue on **N Pettet Dr/Pettet Dr** *(Up Doomsday Hill)*
About 2 mins
3. Continue on **W Maxwell Ave**
About 1 min
- ➔ 4. Turn **right** at **N Ash St**
About 2 mins
- 5. Turn **left** at **W Broadway Ave**
About 3 mins
- ➔ 6. Turn **right** at **W Mallon Ave**
- ➔ 7. Turn **right** at **N Howard St/Riverfront Park**

- go 1.2 mi
total 1.2 mi
- go 0.9 mi
total 2.1 mi
- go 0.3 mi
total 2.4 mi
- go 0.4 mi
total 2.8 mi
- go 0.7 mi
total 3.5 mi
- go 0.1 mi
total 3.6 mi
- go 390 ft
total 3.7 mi

N Howard St/Riverfront Park

Finish is inside Riverfront PK.

• Map # 4
• Return to Finish Line

These directions are for planning purposes only. You may find that construction projects, traffic, weather, or other events may cause conditions to differ from the map results, and you should plan your route accordingly. You must obey all signs or notices regarding your route.